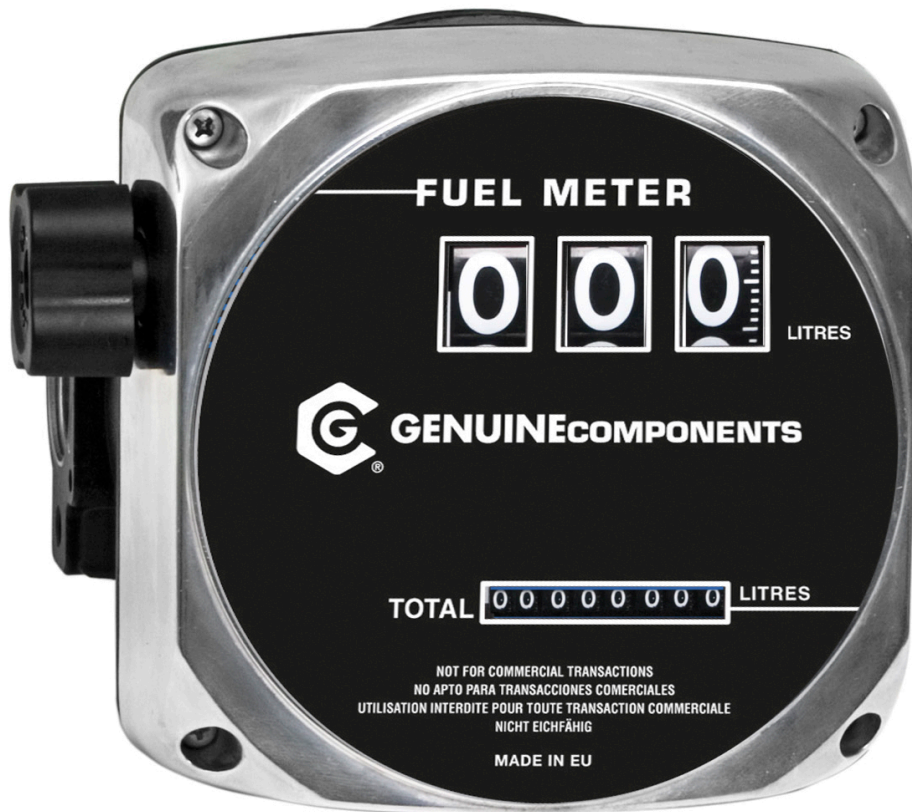


DIESEL METER 100 L/MIN.



Part No
23610

TECHNICAL DATA

DIESEL METER 100 L/MIN.

Reliable, easy to install and simple to calibrate. G1" (f) and inlet and outlet, both with flange for flange mounted applications. Maximum pressure: 10 Bar. Flow range: 10 to 100 l/minute. Precision after calibration: $\pm 1\%$. Meter valid for non commercial applications only..

TECHNICAL DATA

Part No	23610
Capacity	10-100 l/min
Maximum working pressure	1,0 (10) MPa (bar)
Connection	1" (F)-(F) BSP
H.S. Code	90261021