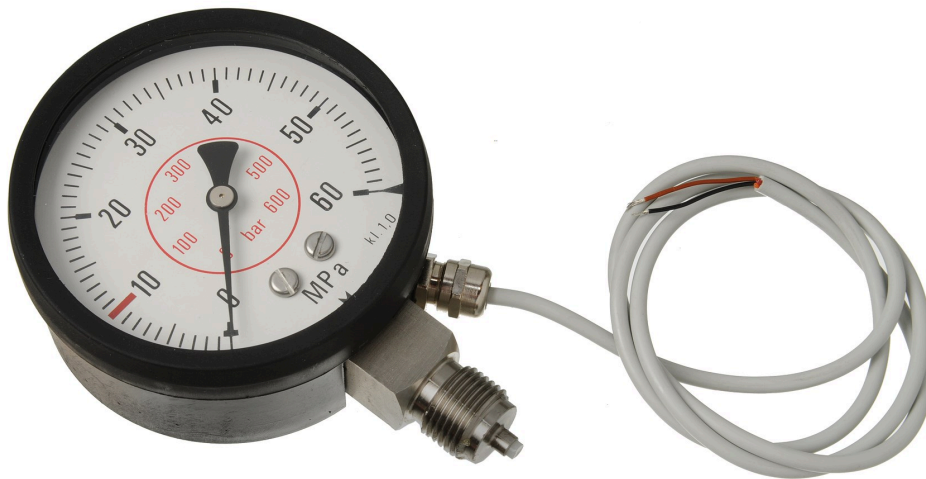


## **PRESSURE GAUGE/LOW PRESSURE SWITCH, FOR GREASE.**



Part No  
23072

## TECHNICAL DATA

### PRESSURE GAUGE/LOW PRESSURE SWITCH, FOR GREASE.

Can be mounted in the outlet tubing for grease to alarm and/or shut off the pump when the pressure is too low or too high. Will also prevent the pump from dry running in case of empty barrel. Built in adjustable pressure switch and micro switch (max 50 V 1A) incl. 1,5 m connection cable. G3/8" (m).

#### TECHNICAL DATA

Part No	23072
Dimension	Ø 100 mm
Maximum pressure	0-60 (0-600) MPa (bar)
Connection	1/2" (M) BSP
H.S. Code	90261021