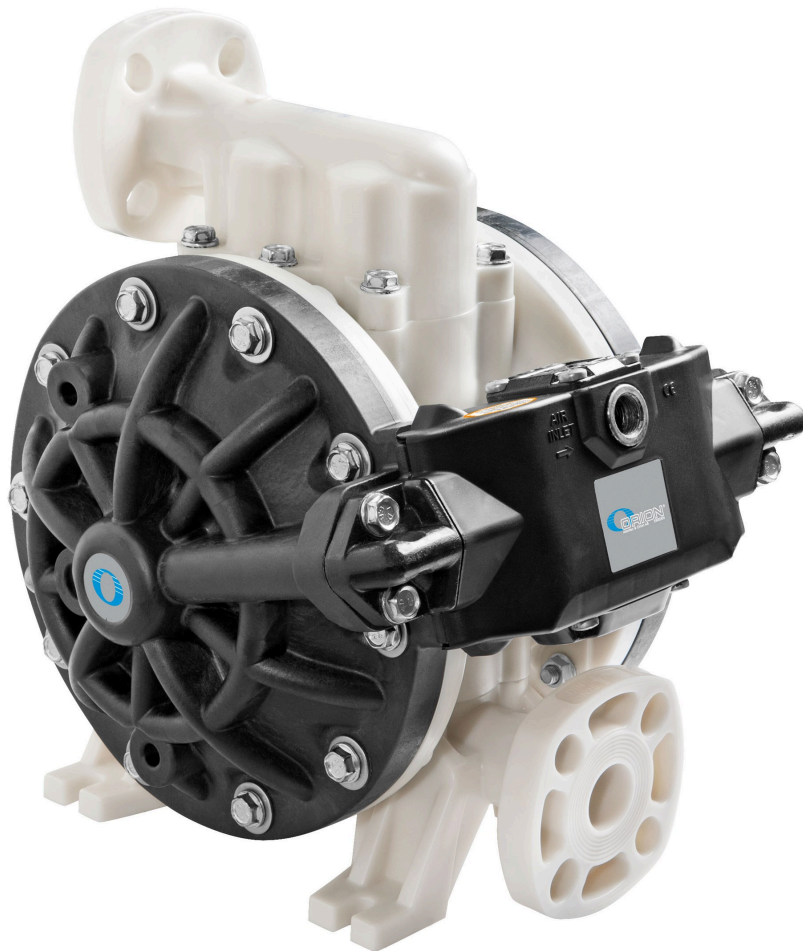


## **DIAPHRAGM PUMP WINDSCREEN FLUID/ADBLUE<sup>®</sup> 200 L/MIN POLYPROPYLENE 1" DIN PN-10 DN25**



Part No  
22331

## TECHNICAL DATA

### DIAPHRAGM PUMP WINDSCREEN FLUID/ADBLUE® 200 L/MIN POLYPROPYLENE 1" DIN PN-10 DN25

For wall or floor installation, the pump is designed to create maximum vacuum.

#### TECHNICAL DATA

Part No	22331
Ratio	1:1
Capacity	200 l/min
Air connection	3/8" (F) BSP
Maximum air pressure	0,8 (8) MPa (bar)
Outlet	1" (F) BSP
Seals	FKM / Viton®
Material pump body	Polypropylene
Material diaphragm	TPE / Hytrel®
Material balls	PTFE / Teflon®
Connection	1" DIN PN-10 DN25
H.S. Code	84138100