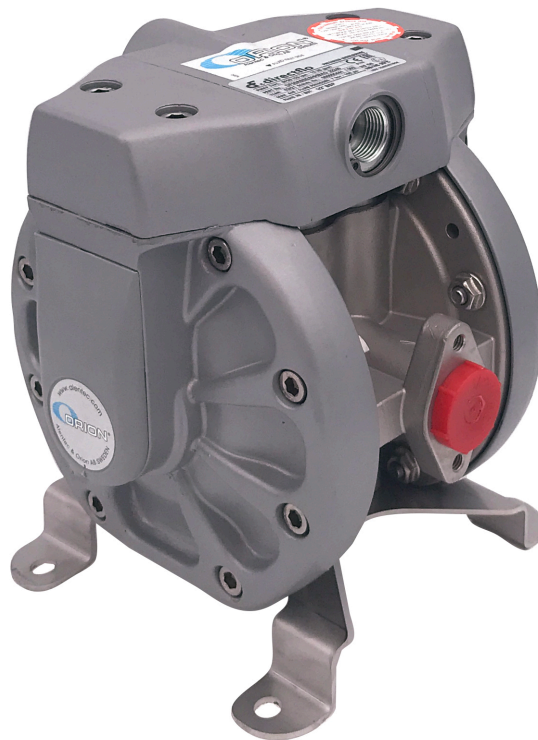


DIAPHRAGM PUMP 50 L/MIN 1/2" (F) BSP 1/2" (F) BSP ATEX



Part No
22240

TECHNICAL DATA

DIAPHRAGM PUMP 50 L/MIN 1/2" (F) BSP 1/2" (F) BSP ATEX

Pressure ratio 1:1 for Adblue®, windscreen liquid etc.

TECHNICAL DATA

Part No	22240
Ratio	1:1
Capacity	50 l/min
Air connection	3/8" (F) BSP
Maximum air pressure	0,8 (8) MPa (bar)
Inlet	1/2" (F) BSP
Outlet	1/2" (F) BSP
Seals	EPDM
Material pump body	Stainless steel (AISI 316)
Material diaphragm	TPE / Hytrel®
Material balls	TPE / Hytrel®
Classification	ATEX
Connection	1/2" - 1/2" (F)-(F) BSP
H.S. Code	84138100