



## **SPRING OPERATED EXHAUST HOSE REELS**



*Part No*

**Gray - 84350 (84580) - 84352 (84584, 84585, 84586) - 84291 (84583)**

**Blue - 84300 (84500)**

**Alentec & Orion AB** Grustagsvägen 4, SE-13840, Älta, SWEDEN · [Info@alentec.se](mailto:Info@alentec.se) · [alentec.com](http://alentec.com)

## Spring operated exhaust hose reels

TO ACHIEVE OPTIMUM FUNCTION AND SAFETY, PLEASE READ THIS MANUAL CAREFULLY BEFORE USING THE PRODUCT!K!

### Safety information:

**Pay attention and take care when maneuvering the exhaust hose reel so that damage to person or property is avoided!**

**Warning! Hoses and nozzles can be hot from exhaust fumes.**

**Warning! The spring housing contains a powerful spring and must not be opened. Use caution when servicing exhaust hose reels. If in doubt about the procedure, contact Alentec & Orion Technical Support.**

WHERE CONTROLS AND RULES EQUIPMENT IS USED, THE ELECTRICAL CONTROL CABINET MAY ONLY BE OPENED BY AUTHORIZED ELECTRICIANS.

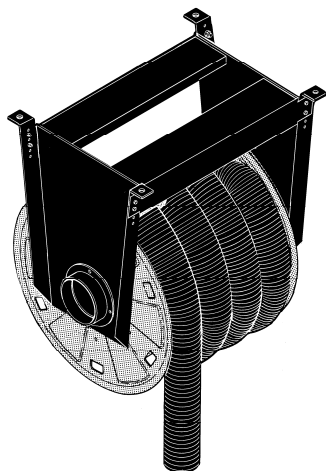
### Operation:

The spring-driven exhaust roller works according to the roller blind principle. Pull out the hose and it is locked in the desired position. One more move and it is rolled back.

The hose stopper is set to the appropriate hose height when rewinding.

# Mounting instructions

## Spring operated exhaust hose reel

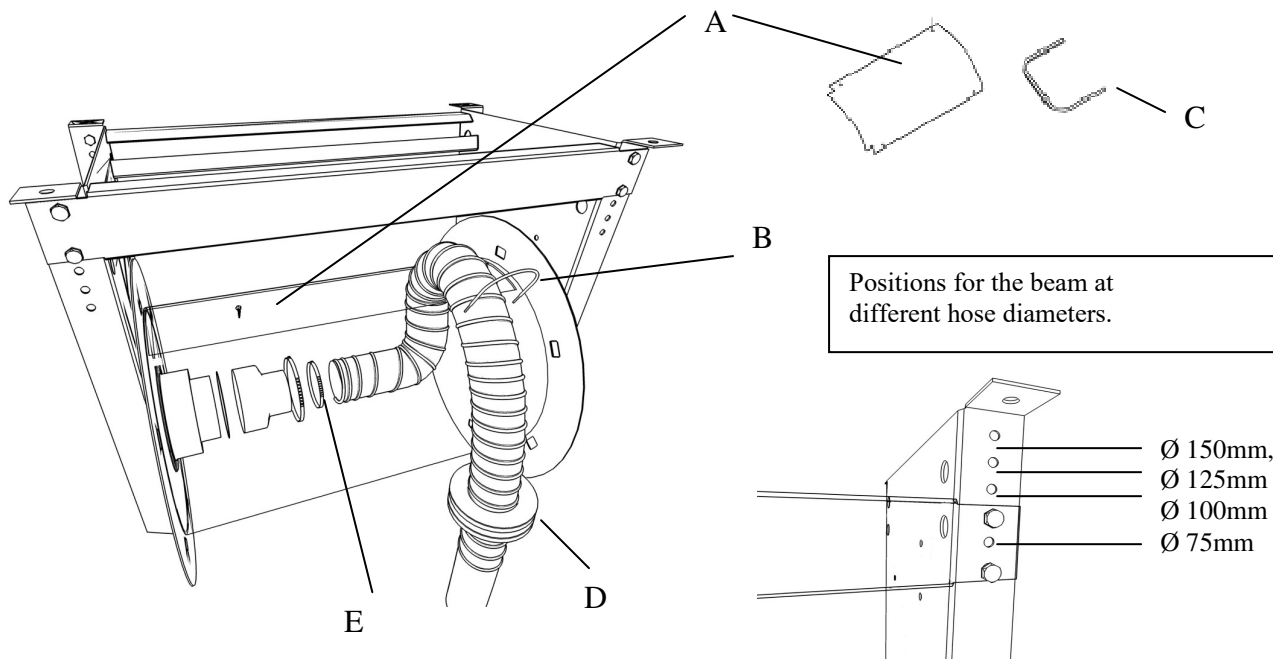


Pre-wind spring tension table

Hose Ø	Hose Length	Pre-tension
75 mm 3"	5m	5 turns
	7.5m	6 turns
	10m	7 turns
100 mm 4"	5m	5 turns
	7.5m	6 turns
	10m	7 turns
125 mm 5"	5m	6 turns
	7.5m	7 turns
	10m	8 turns
150 mm 6"	5m	7 turns
	7.5m	8 turns
	10m	10 turns
200 mm	5m	4 turns
	7.5m	5 turns
	10m	7 turns
	12.5m	

## Hose mounting

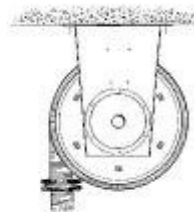
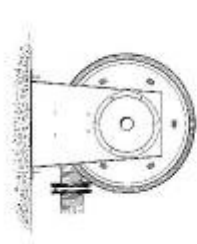
1. Pre-tension the hose reel according to the table above for all different hoses. Turn the drum in the direction of the arrow, see the arrow on the decal of the spring housing.
2. Remove the drum cover A. \*
3. Install the connector kit. See picture below.\*
4. Mount the hose on the socket with clamps E.
5. Bend the hose in a natural soft bend and fix it with bracket B.
6. Screw back the drum cover A.
7. Mount the edging strip C in the opening in the drum where the hose comes out.
8. Mount the hose stop D so that the hose stays at the accessible height when the hose is rolled in.



## Mounting

### Wall mounting

Max montagehöjd:  
3m at hose lenght 5m  
5.5m at hose lenght 7.5m  
8m at hose lenght 10m



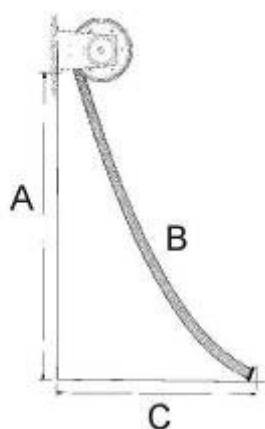
### Ceiling mounting

Max height:  
3.5 m at hose lenght 5m  
6m at hose lenght 7.5m  
8.5m at hose lenght 10m

## Mounting on different surfaces

When the roller is mounted against a stable surface such as an iron beam, cast concrete, etc., normally use dimensioned attachments. For porous or otherwise unsafe materials such as hollow bricks, aerated concrete, etc., always consult an expert.

## Range and mounting height



A=Mounting height

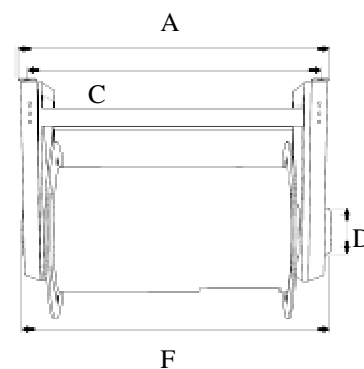
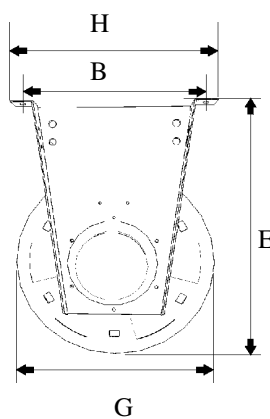
B=Hose length

C=Max reach

A	B	C	B	C	B	C
2.5 m	5 m	4.4 m				
3 m	5 m	4.2 m	7.5 m	6,2 m		
3.5 m	5 m	3.8 m	7.5 m	5,9 m	10 m	8,5 m
4 m	5 m	3.3 m	7.5 m	5,5 m	10 m	8,3 m
4.5 m	5 m	2.6 m	7.5 m	5,2 m	10 m	8,0 m
5 m			7.5 m	4,7 m	10 m	7,7 m
5.5 m					10 m	7,4 m

## Weight/Measurements

Part No:	Weight: (w/o hose)
84291 (450 mm)	44 kg
84352 (650 mm)	49 kg
84350 (850 mm)	54 kg
84300 (850 mm)	54 kg

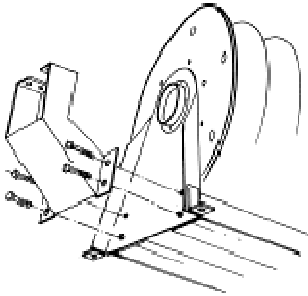


	84291 (450 mm)	84352 (650 mm)	84350 (850 mm)	84300 (850 mm)
A	630mm/24.8"	830 mm/32.7"	1030 mm/40.5"	1030 mm/40.5"
B	500mm/19.7"	500 mm 19.7"	500 mm/19.7"	500 mm/19.7"
C	574mm/22.6"	774 mm/30.5"	974 mm/38.3"	974 mm/38.3"
D	Ø 160 mm/6.30"	Ø 160 mm/6.30"	Ø 160 mm/6.30"	Ø 160 mm/6.30"
E	790 mm/31.1"	790 mm/31.1"	790 mm/31.1"	790 mm/31.1"
F	650mm/25.6"	850 mm/33.5"	1050mm/41.3"	1050mm/41.3"
G	600 mm/23.6"	600 mm/23.6"	600mm/23.6"	600mm/23.6"
H	552mm/21.7"	552mm/21.7"	552mm/21.7"	552mm/21.7"

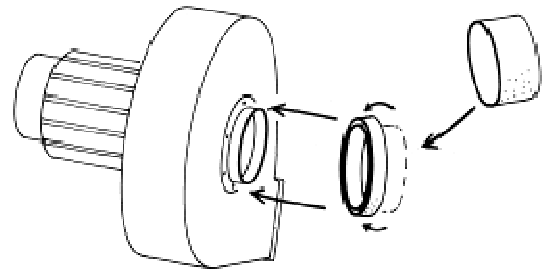
## Mounting a fan

### Applies only to 84323

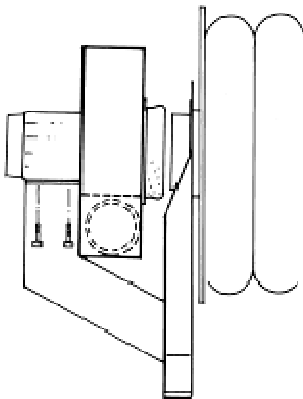
The spring-driven exhaust reel is delivered complete with ceiling / wall bracket.  
The exhaust hose reel can be connected to a central fan or with a directly mounted fan (see 1-4).  
Mount the fan with the hose reel standing upside down on the floor.  
Then mount the complete hose reel in place.



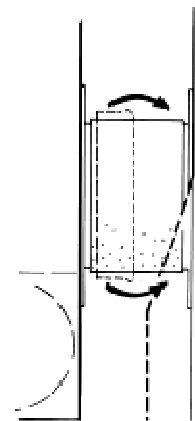
1. Mount the console (88410) to the hose reel



2. Mount the sealing ring (84323) folded once, on the fan inlet connector.



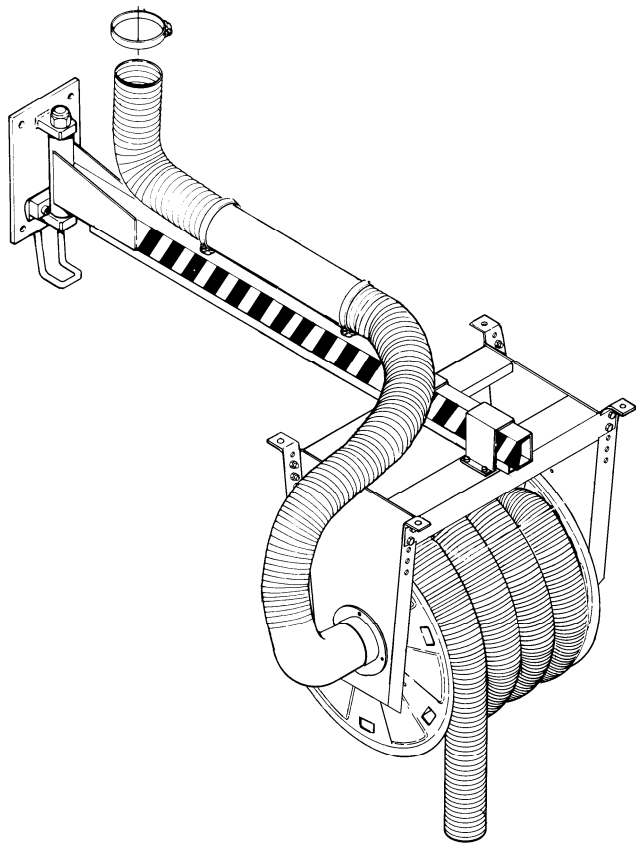
3. Fasten the fan to the console.



4. Fold the sealing ring over the connector on the hose reel

**Swing arm for exhaust hose reel**

**Note! Only for 84350 or smaller hose reels.**

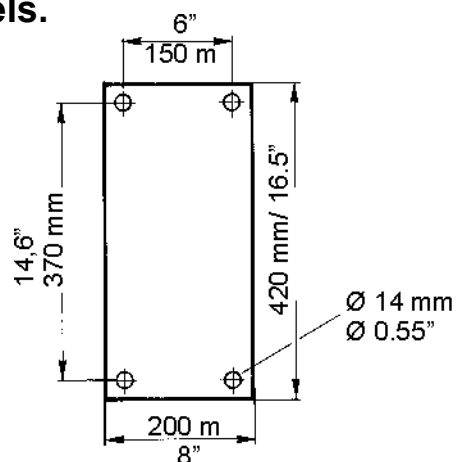


Part No:	Reach mm (see page 9)	Max. load per bolt	Safety requirements per bolt
88417	4500	900	2700

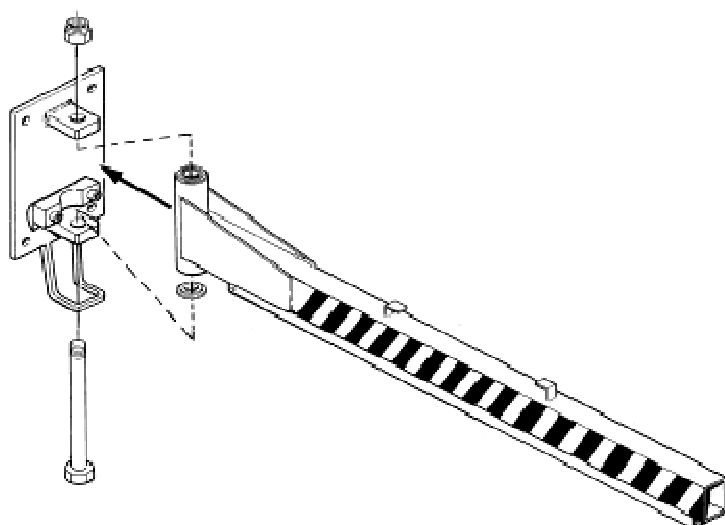
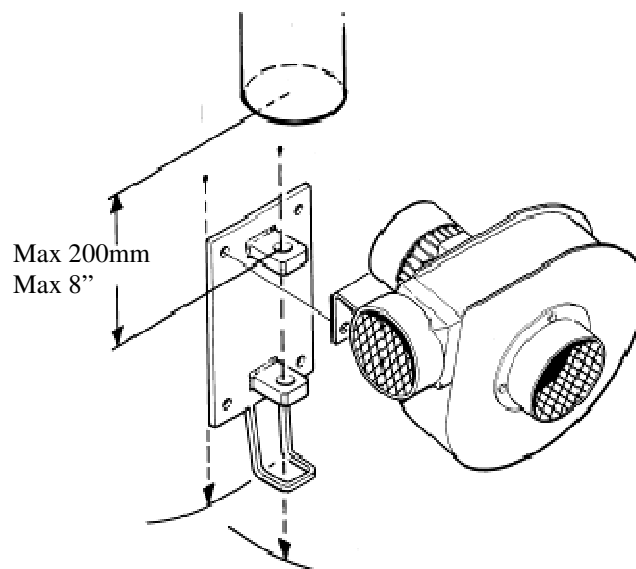
## Mounting instructions

**Note! Only for 84350 or smaller hose reels.**

1. Fasten the plate to the wall.



2. Mount fan (if included)

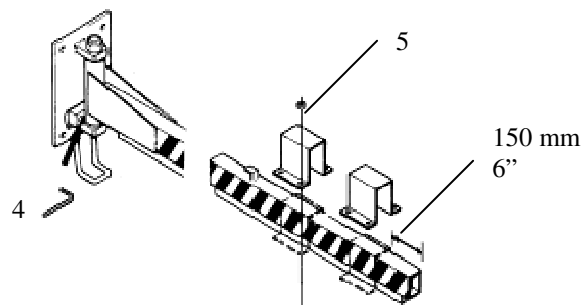


3. Mount the swing arm

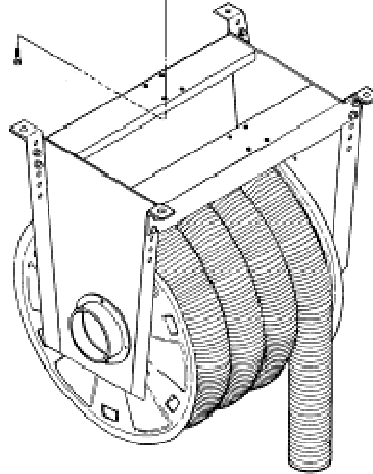
## Mounting instructions

### Only for 84350 or smaller hose reels.

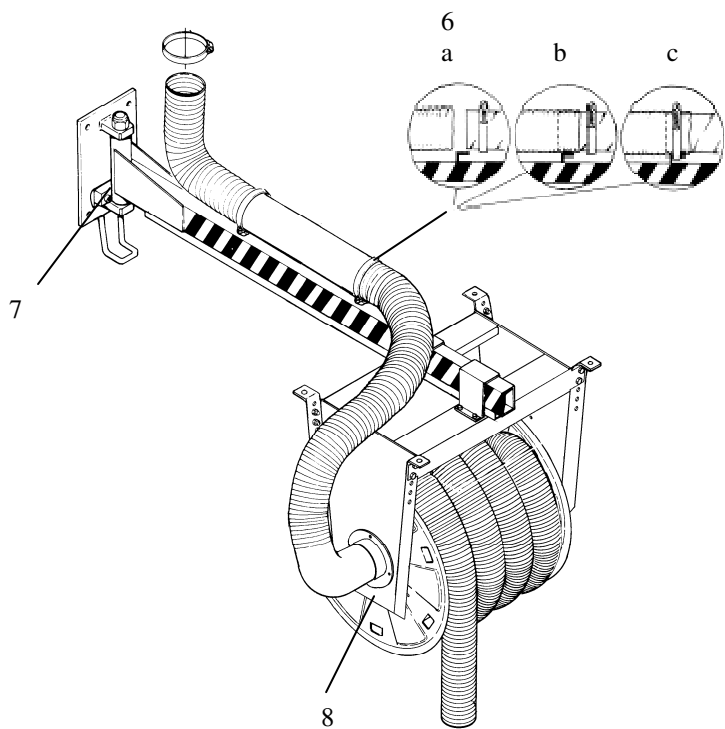
4. Adjust the joint so that the reel does not slip.



5. Mount the exhaust hose reel to the arm.



6. Mount the exhaust spiral tube and hose to the swing arm.



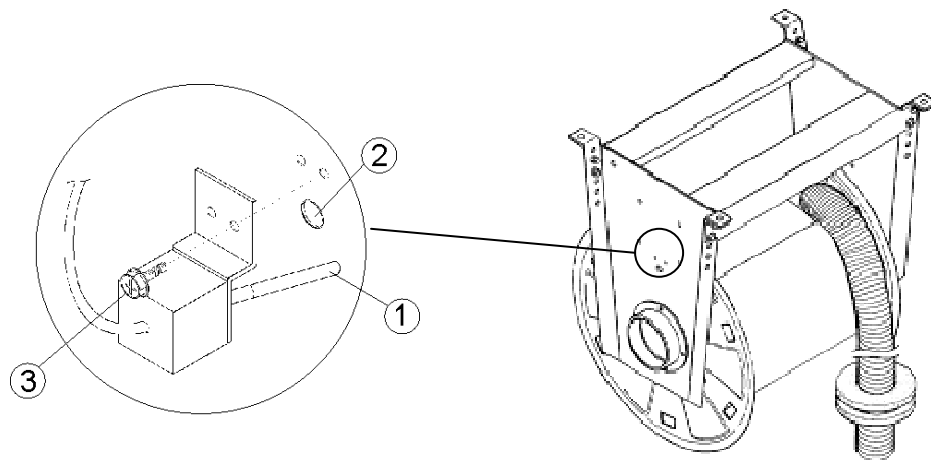
7. Adjust bearing to desired friction

8. Mount elbow connector to hose reel.

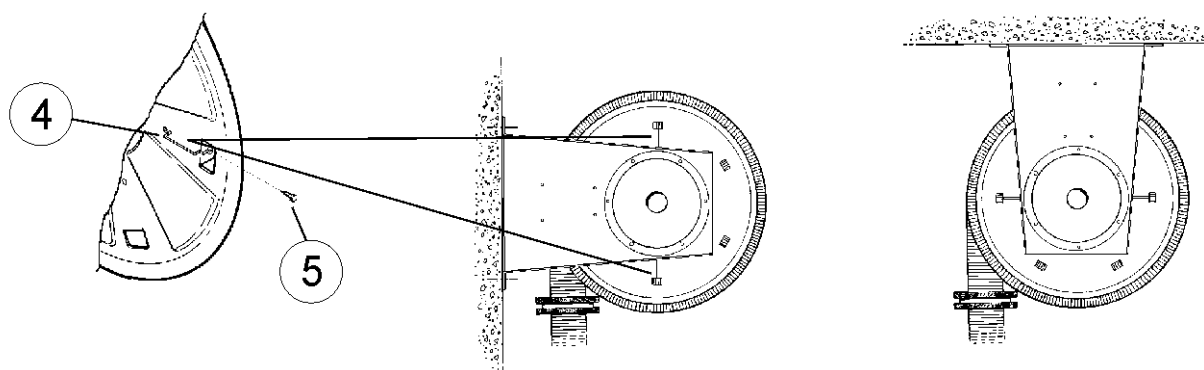


# Mounting instructions

## Micro switch 88400



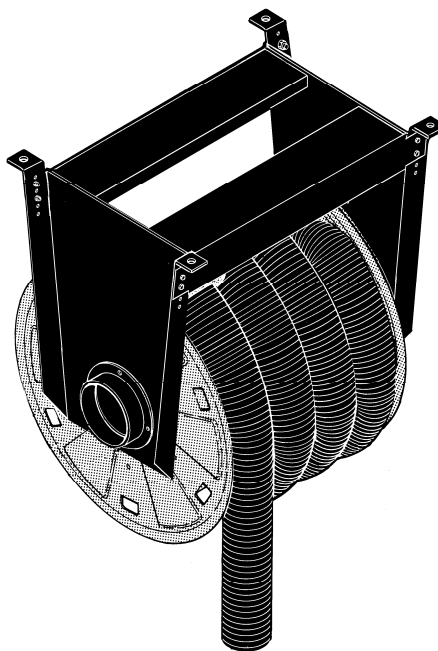
1. Insert the switch sensor (1) in the hole (2).
2. Fasten the switch using the indicated screws (3).



3. Verify that the switch can move freely in both directions.
4. Pull out the hose until four "snaps" is heard from the ratchet.
5. Mount the manouver springs (4) (2 pcs) on the side of the reel drum by loosening two of the screws which hold the drum. Note! Mount the screws (5) in the holes indicated.
6. Reassemble screws.
7. Regarding electric connection, see wiring diagram for each respective component.

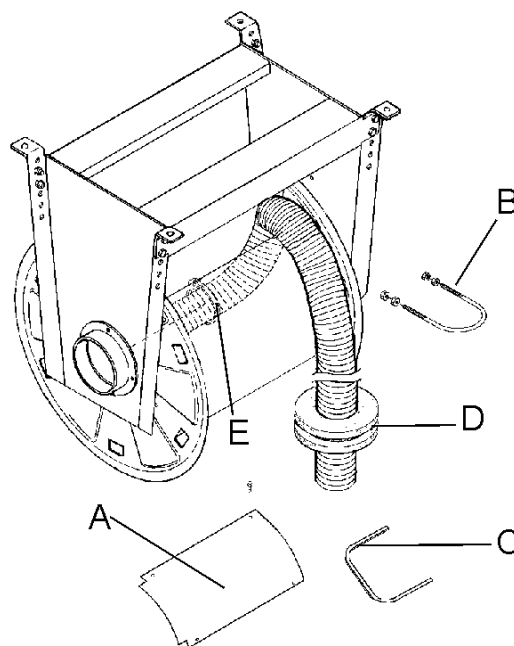
## Maintenance instructions

### Spring operated exhaust hose reel



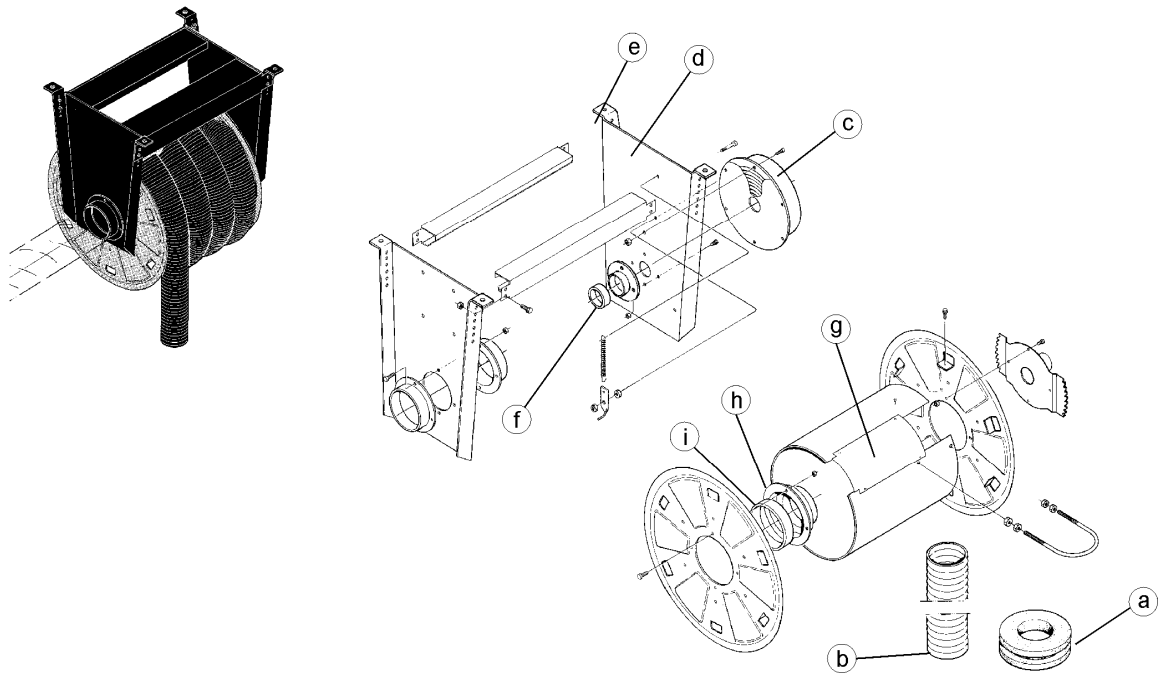
### Hose replacement

1. Roll out the hose completely and lock the reel in the outermost position.
2. Remove edging strip C, drum cover A and hose support B.
3. Loosen the hose clamp E at the connection socket, remove the old hose.
4. Install new hose and bend the hose in a natural soft bend and fix the one with the hose support B.
5. Screw back the drum cover A.
6. Mount the edging strip C in the opening in the drum where the hose comes out.
7. Move the hose stopper (D) on the new hose and adjust so that the hose stays at the accessible height when the roller rolls in.
8. The reel is now be ready for use.



## Replacing spring cassette

1. Remove the hose stopper (a) and allow the hose (b) to roll up completely on the drum.
2. Rotate the roller about 4 turns "backwards" so that the spring tension is neutralised (if the spring is still intact).
3. Remove all Allen screws on the spring cassette (c). Mark the position of the spring cassette!
4. Put the spring cassette with a new spring in place. Tighten the bolts alternately.
5. "Pre-tension" the roller about 7 turns. Attach the hose top to the hose.

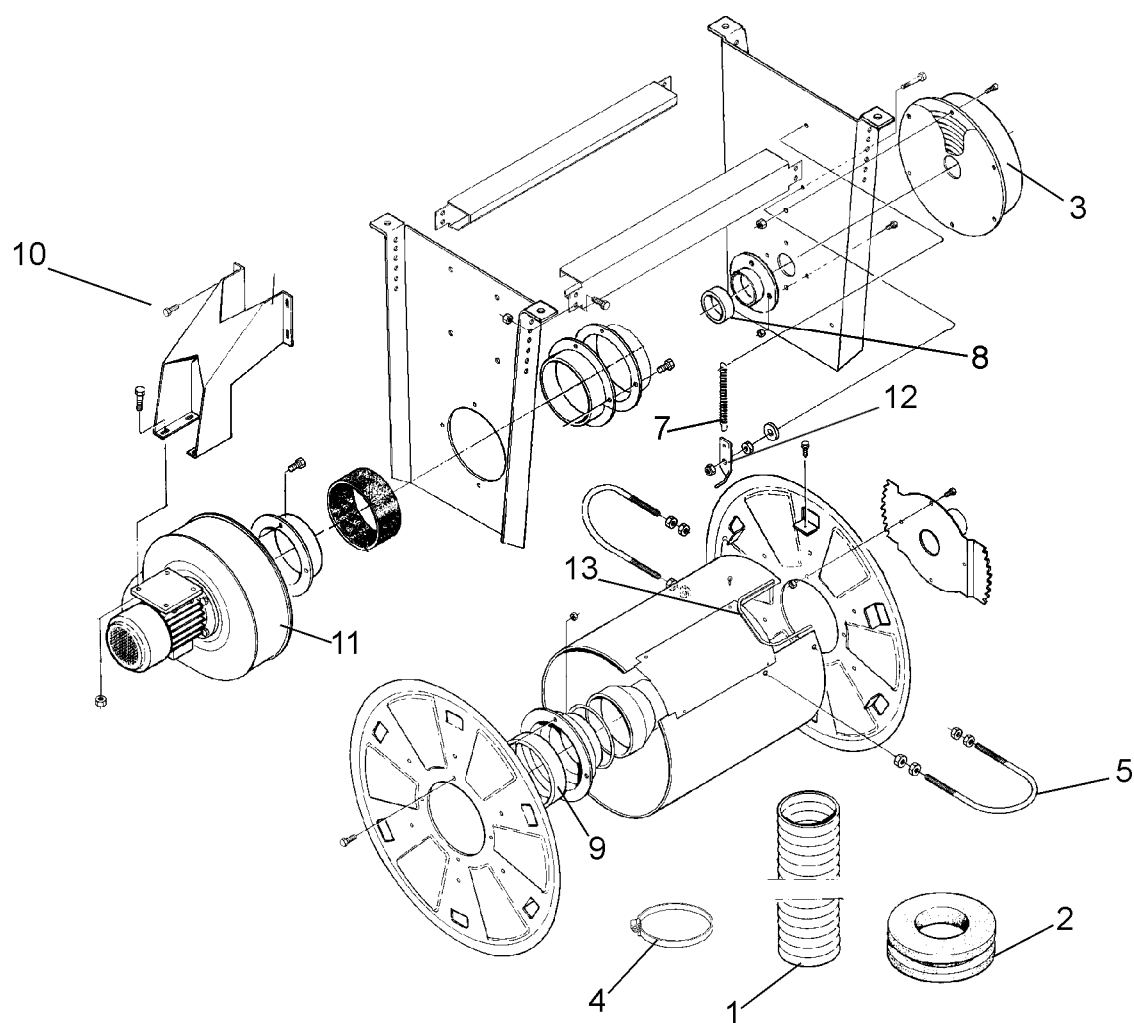


## Replacing plastic bearings

This work is most easily performed with the reel standing on the floor.

1. Remove the hose stopper (a) and allow the hose (b) to roll up completely on the drum.
2. Spin the roller about 7 turns "backwards" so that the spring tension is neutralised.
3. Loosen the support on the spring side (d) by loosening the bolts at the beam (e).
4. Lift the drum out of the reel.
5. Replace the plastic bearing (f).
6. Unscrew the drum cover (g). Remove the connection socket (h) and replace the plastic bearing (i).
7. Reassemble in reverse order.

## Spare part drawing



## Spare parts list

	Part No	
A	All models	
B	84291/84352 (75 mm hose)	
C	84291/84352 (100 mm hose)	
D	84350 / 84300 (125 mm hose)	
E	84350 / 84300 (150 mm hose)	

Pos	Part No	A	B	C	D	E	F	Description
2	8340040		1					Hose stopper 75 mm/ 3"
	8340041			1				Hose stopper 100 mm/ 4"
	8340042				1			Hose stopper 125 mm/ 5"
	8340043					1		Hose stopper 150 mm/ 6"
	989 186						1	Hose stopper 200 mm/ 8"
3	8340048		1	1	1	1	2	Spring cassette
4	88590		1					Hose clamp 75 mm / 3"
	88591			1				Hose clamp 100 mm/ 4"
	88592				1			Hose clamp 125 mm/ 5"
	88593					1		Hose clamp 150 mm/ 6"
	88594						1	Hose clamp 200 mm/ 8"
5	962 126		1					U-bolt 75 mm / 3"
	962 118			1				U-bolt 100 mm/ 4"
	962 134				1			U-bolt 125 mm/ 5"
	962 159					1		U-bolt 150 mm/ 6"
10	88410	1						Console
11	84323	1						Fan
12	8340046	1	1	1	1	1	1	Latch
7	8340047							Spring for latch